

ORIGINAL ARTICLE

First report of the Nearctic planthopper *Metcalfa pruinosa* (Say, 1830) in Poland, its current status and potential threats (Hemiptera: Fulgoromorpha: Flatidae)

Dariusz Świerczewski^{1*}, Andrzej Józef Woźnica², Teodor Smulski³, Adam Stroński^{4*}

¹ Faculty of Science and Technology, Jan Długosz University, Częstochowa, Poland

² Institute of Environmental Biology, Wrocław University of Environmental & Life Sciences, Wrocław, Poland

³ Amateur entomologist, Wieliszew, Poland

⁴ Museum and Institute of Zoology, Polish Academy of Sciences, Warszawa, Poland

Vol. 62, No. 3: 238–246, 2022

DOI: 10.24425/jppr.2022.142130

Received: March 12, 2022

Accepted: May 11, 2022

Online publication: August 16, 2022

*Corresponding address:

dswier@ujd.edu.pl

astroinski@miiz.waw.pl

Responsible Editor:

Natasza Borodynko-Filas

Abstract

Metcalfa pruinosa (Say, 1830) was recorded for the first time in Poland, in the city of Warsaw. This Nearctic species of the Flatidae family was introduced into Europe in the late 1970s and has expanded its range ever since. We provide data on the first record as well as briefly characterize the insect in terms of its diagnostic features, biology and potential harm to agriculture and the environment.

Keywords: agriculture, first record, *Metcalfa pruinosa*, pest, Poland

Introduction

The Flatidae is the fourth largest family of planthoppers (suborder Fulgoromorpha), with 297 genera and 1446 species worldwide (Bourgoin 2022), found primarily in the tropics. They can be characterized by two external morphological characteristics: i) a submarginal vein, parallel to the wing margin, and a defining series of marginal cells in the apical and leading portion of the front wing and ii) the presence of wax-bearing pustules in the claval region (Bartlett *et al.* 2014). Flatids are mostly macropterous, which means that they possess a transversal row of five to six closed nodal cells, plus one complete distal row of open and closed post-nodal cells. Adult wings are often covered with a dusting of wax, whereas nymphs are distinguished with

flocculent wax. The family covers two subfamilies: Flatinae with fore wings, which are usually tectiform and Flatoidinae with wings held horizontally (O'Brien 2002). Adults and immature stages utilize the above-ground parts of woody and semi-woody plants (Bartlett *et al.* 2018).

In Europe Flatidae are represented by two species of *Phantia* Fieber, 1866: *Phantia michelina* Della Giustina & Remane, 1992 (France, Corsica) and *Phantia subquadrata* (Herrich-Schäffer, 1838) (southern Europe), 33 species of *Cyphopterus* Melichar, 1905 distributed in southwestern Europe and the Canary Islands and *Metcalfa pruinosa* (Say, 1830) of Nearctic origin (Hoch 2017).

Metcalfa pruinosa known as citrus flatid planthopper belongs to the family Flatidae (Fulgoroomorpha) and is widely distributed in North America. The first record in Europe dates back to 1979 from Italy – region Veneto (Zangheri and Donadini 1980), where it quickly established a large population, and then spread to southern France, Slovenia and southern Austria (Giustina 1986). To date it has colonized about 15 European countries and this process is expected to continue, as has been shown by Byeon *et al.* (2018).

It is assumed that the spreading of *M. pruinosa* is due to the transport of tree and ornamental seedlings from countries where the pest is fully established. The planthopper can migrate to new localities and the natural spreading of *M. pruinosa* is ca. 50 m per year (Lauterer 2002).

Being highly polyphagous, in North America it is not of significant economic importance, doing little harm to citrus trees and some ornamentals (Mead 1969). However, in Europe this gregarious insect infests various cultivated and wild trees, shrubs and weedy plants. More than 120 species in 50 families have been reported in the United States (Wilson and Lucchi 2000), over 300 species in 78 families in Europe (Bagnoli and Lucchi 2000; Alma *et al.* 2005), and 145 species in 62 families in South Korea (Yeyeun *et al.* 2011; Kim and Kil 2014).

Materials and Methods

The discovery of *M. pruinosa* in Poland was the result of observation and collection of nymphs and adult insects. To collect individuals, the sweep-netting method was used. Specimens were identified on the basis of external characteristics as well as dissected male genitalia structures using illustrations and descriptions given by Holzinger *et al.* (2003).

Our evaluation of the damage to cultivated plants in Poland was based on a thorough survey of scientific literature describing the ability of *M. pruinosa* to transmit plant pathogens as well as a review of a list of host plants.

Host plant names and classification are after Tropicos. The name of Polish zoogeographical regions is adopted after the series of Catalogues of Polish Fauna (Burakowski *et al.* 1973).

Photos of nymphs exuvia of *M. pruinosa* and scale insect (Lecaniidae) clusters were taken using a stereomicroscope Leica MZ 16 with digital camera IC 3D (Museum and Institute of Zoology PAS, Warsaw). Photos of *M. pruinosa* terminalia were taken using a stereomicroscope Nikon SMZ 25 with digital camera Nikon Ri2 (Resource and Teaching Support Centre, Wrocław University of Environmental and Life Sciences, Wrocław).

Results

Systematics

Class Insecta Linnaeus, 1758
Order Hemiptera Linnaeus, 1758
Suborder Fulgoroomorpha Evans, 1946
Superfamily Fulgoroidea Latreille, 1810
Family Flatidae Spinola, 1839
Subfamily Flatinae Spinola, 1839
Tribe Nephesini Distant, 1906
Genus *Metcalfa* Caldwell & Martorell, 1951
Species *Metcalfa pruinosa* (Say, 1830)

Morphology

The recognition of *M. pruinosa* in Poland is easy since this species is the only local representative of the family Flatidae. Therefore, it can be characterized by the following diagnostic features:

Adults. Individuals are 7–8 mm in length. The dorsal surface of the body and forewings are blackish brown (Figs 1A–E, 2A–D). The body and forewings are covered with a whitish powdery secretion making the blackish color bluish gray. A characteristic pair of dark spots is located on the basal half of each forewing. Male and female genitalia are shown in Figures 4A–D.

Nymphs. The larvae are agile and soft, surrounded by elongate filaments of white waxy exudate, sometimes covering the whole body. They are particularly long at the end of the abdomen. After removing the wax layer the larval body is white to light green, sometimes with an ochreous tinge. The same waxy secretion is deposited on leaves and shoots where the nymphs feed (Figs 3C–D). According to Wilson and McPherson (1981), there are five larval instars, differing in the size of the head capsule and wing pads. The last instar is 5–6 mm long.

Localities in Poland

The individuals of *M. pruinosa* were preliminary identified on the basis of photos and individuals collected by Teodor Smulski in Warsaw between 16th and 21st August 2021. The species was firstly observed on *Catalpa* sp., and after detailed examination and identification was regarded as the first record for Poland (Figs 2E–F).

Material examined: Mazowiecka Lowland – Warszawa UTM EC08; Białowieska Street (distance of 150 m between Budrysów and Ignańska Streets), Praga-Południe district; 52.238050, 21.091304.

August 19, 2021, 9♂♂, 3♀♀, 3 larvae (preserved in 96% ethanol), 14♂♂, 21♀♀ (as dried specimens),



Fig. 1A–E. *Metcalfa pruinosa* – adults feeding on different plant species (Photos by Teodor Smulski, August 22, 2021)

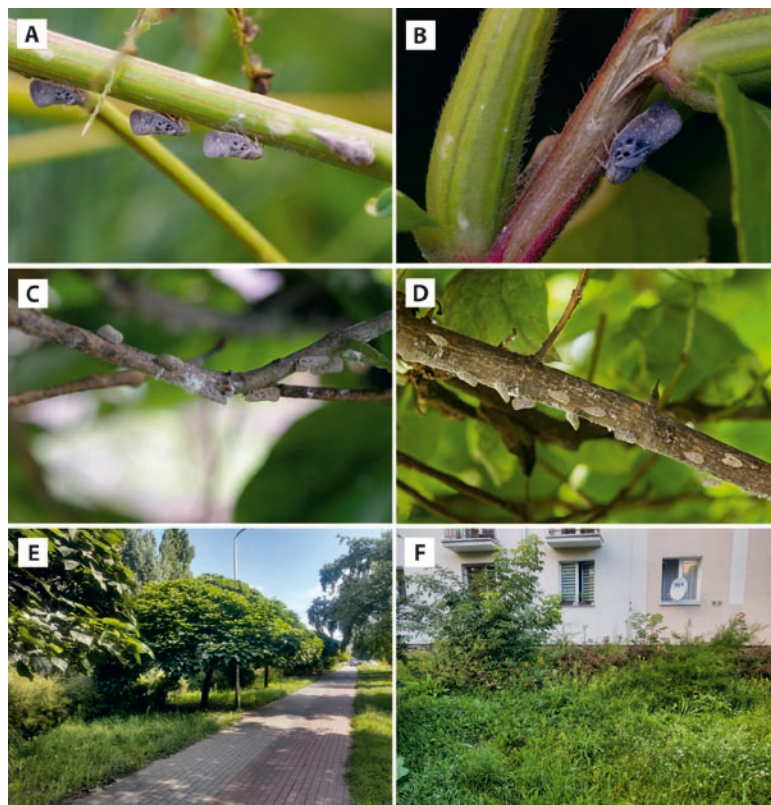


Fig. 2. *Metcalfa pruinosa* – individuals and collecting site; (A–D) – individuals on different plant species; (E–F) – collecting site: (E) – *Catalpa* trees, (F) – flowerbed with ornamental plants (Photos by Teodor Smulski, August 21, 2021)

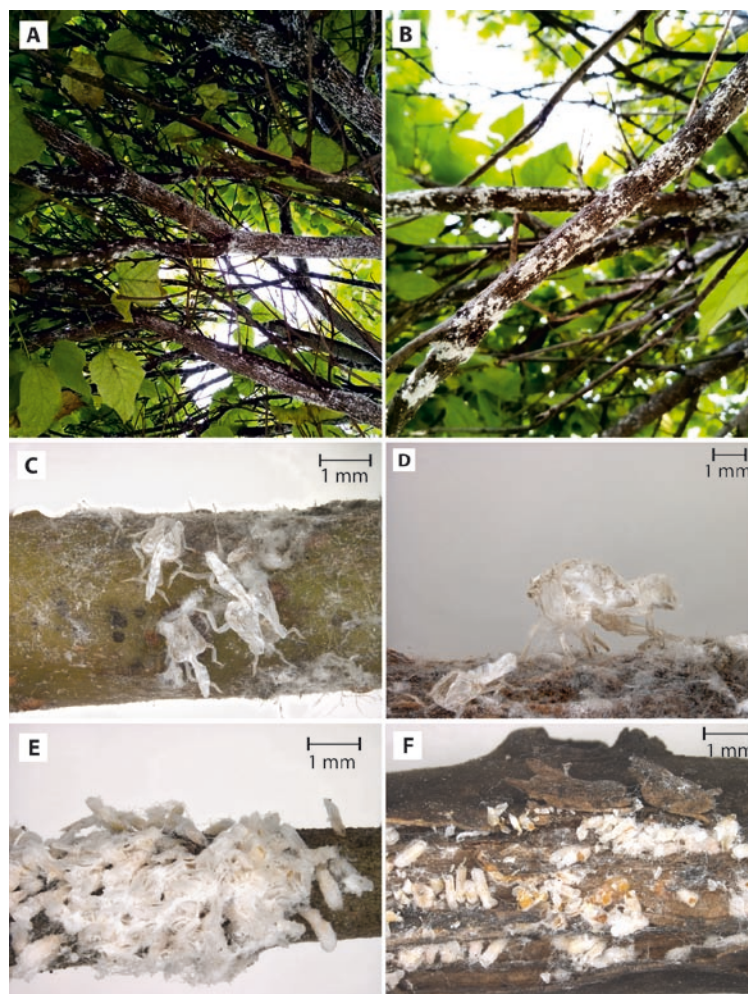


Fig. 3. *Metcalfa pruinosa* and scale insects (Lecaniidae) on *Catalpa* tree: (A–B) – twigs covered with wax filaments excreted by nymphs of *Metcalfa* and Lecaniidae; (C–D) – nymphs exuvia of *Metcalfa pruinosa*; (E–F) – cluster of Lecaniidae individuals covered with wax filaments (Photos by Adam Stroiński, September 28, 2021)

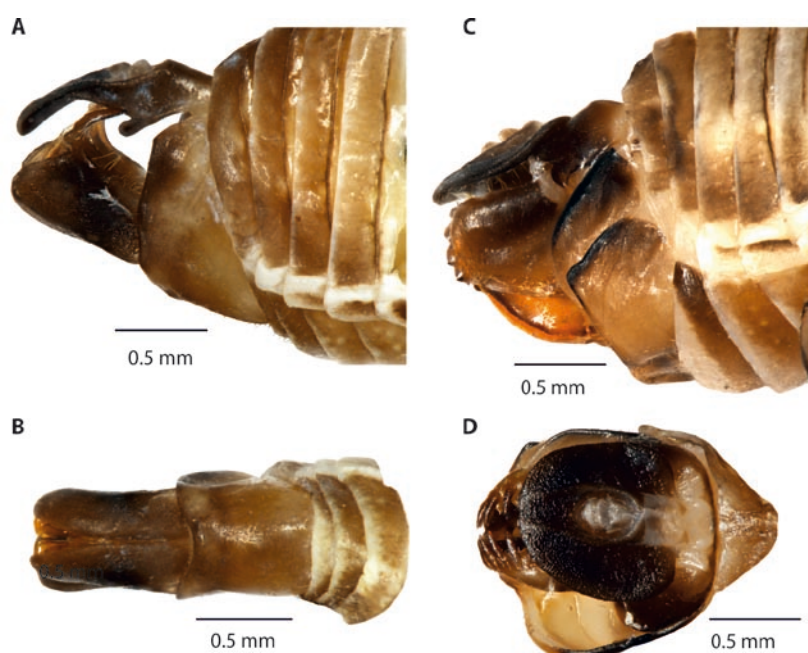


Fig. 4. *Metcalfa pruinosa* – terminalia: (A–B) – male: (A) – lateral view, (B) – ventral view; (C–D) – female: (C) – lateral view, (D) – dorsal view (Photos by Paweł Jarzembowski)

all collected by Teodor Smulski from *Catalpa* sp. and *Melilotus albus*, identified by Andrzej J. Woźnica (in AJW private collection).

September 28, 2021, 33♂♂, 28♀♀, 3 larvae (preserved in 96% ethanol and as dried specimens), all collected from various plants (Table 1) and identified by Adam Stroiński (collection of Museum and Institute of Zoology PAS).

Remark: the infestation of *Catalpa* trees by scale insects of the Lecaniidae family was also observed (Figs 3A–B, E–F).

Host plants

During the investigations 22 species were identified as host plants of *M. pruinosa* in Warsaw, which are presented in Table 1. All plants belong to angiosperms, apart from blue spruce (*Picea pungens*), which represents gymnosperms.

Bionomy

Nymphs were first observed in June, adults emerged in mid-July and survived until the end of October. This

Table 1. List of host plant species utilized by *Metcalfa pruinosa* in the locality site of Warsaw

Species	Genus	Family	Order	Superorder
<i>Acer negundo</i> L.	<i>Acer</i> L.	Sapindaceae Juss.	Sapindales Juss. ex Bercht. & J. Presl	Rosanae Takht.
<i>Acer platanoides</i> L.	<i>Acer</i> L.	Sapindaceae Juss.	Sapindales Juss. ex Bercht. & J. Presl	Rosanae Takht.
<i>Amaranthus retroflexus</i> L.	<i>Amaranthus</i> L.	Amaranthaceae Juss.	Caryophyllales Juss. ex Bercht. & J. Presl	Caryophyllanae Takht.
<i>Artemisia vulgaris</i> L.	<i>Artemisia</i> L.	Asteraceae Bercht. & J. Presl	Asterales Link	Asteranae Takht.
<i>Berberis</i> sp.	<i>Berberis</i> L.	Berberidaceae Juss.	Ranunculales Juss. ex Bercht. & J. Presl	Ranunculanae Takht. ex Reveal
<i>Catalpa bignonioides</i> Walter	<i>Catalpa</i> Scop.	Bignoniaceae Juss.	Lamiales Bromhead	Asteranae Takht.
<i>Conyza</i> sp.	<i>Conyza</i> Less.	Asteraceae Bercht. & J. Presl	Asterales Link	Asteranae Takht.
<i>Cornus</i> sp.	<i>Cornus</i> L.	Cornaceae Bercht. ex J. Presl	Cornales Link	Asteranae Takht.
<i>Crataegus monogyna</i> Jacq.	<i>Crataegus</i> L.	Rosaceae Juss.	Rosales Bercht. & J. Presl	Rosanae Takht.
<i>Deutzia</i> sp.	<i>Deutzia</i> Thunb.	Hydrangeaceae Dumort.	Cornales Link	Asteranae Takht.
<i>Juglans regia</i> L.	<i>Juglans</i> L.	Juglandaceae DC. ex Perleb	Fagales Engl.	Rosanae Takht.
<i>Ligustrum vulgare</i> L.	<i>Ligustrum</i> L.	Oleaceae Hoffmanns. & Link	Lamiales Bromhead	Asteranae Takht.
<i>Lycium chinense</i> Mill.	<i>Lycium</i> L.	Solanaceae Juss.	Solanales Juss. ex Bercht. & J. Presl	Asteranae Takht.
<i>Melilotus albus</i> Medik.	<i>Melilotus</i> (L.) Mill.	Fabaceae Lindl.	Fabales Bromhead	Rosanae Takht.
<i>Oenothera</i> sp.	<i>Oenothera</i> L.	Onagraceae Juss.	Myrtales Juss. ex Bercht. & J. Presl	Rosanae Takht.
<i>Picea pungens</i> Engelm.	<i>Picea</i> A. Dietr.	Pinaceae Spreng. ex Rudolphi	Pinales Gorozh.	–
<i>Sambucus nigra</i> L.	<i>Sambucus</i> L.	Viburnaceae Raf.	Dipsacales Juss. ex Bercht. & J. Presl	Asteranae Takht.
<i>Solidago gigantea</i> Aiton	<i>Solidago</i> L.	Asteraceae Bercht. & J. Presl	Asterales Link	Asteranae Takht.
<i>Spiraea japonica</i> L. f.	<i>Spiraea</i> L.	Rosaceae Juss.	Rosales Bercht. & J. Presl	Rosanae Takht.
<i>Symphiotrichum novae-angliae</i> (L.) G.L. Nesom	<i>Symphiotrichum</i> Nees	Asteraceae Bercht. & J. Presl	Asterales Link	Asteranae Takht.
<i>Tamarix ramosissima</i> Ledeb.	<i>Tamarix</i> L.	Tamaricaceae Link	Caryophyllales Juss. ex Bercht. & J. Presl	Caryophyllanae Takht.
<i>Urtica dioica</i> L.	<i>Urtica</i> L.	Urticaceae Juss.	Rosales Bercht. & J. Presl	Rosanae Takht.

indicates that in Poland the citrus flatid planthopper gives one generation per year and overwinters as eggs, which agrees with observations of other authors (Mead 1969; Lauterer 2002).

Discussion

The first recorded population of *M. pruinosa* in Poland seems to be persistent taking into account that several individuals were already observed by amateur entomologist Teodor Smulski in 2020 and the number of observed individuals in 2021 was quite high. All observed plants to be attacked belonged to angiosperms, with the exception of blue spruce (*Picea pungens*). Vlad and Grozea (2016) observed that conifers are rarely attacked, probably because they have needles or scale-like leaves with thick, rough and waxy epidermis. In Romania the flatid only attacked *Pinus strobus*, *Taxus baccata* and *Thuja orientalis*.

The most obvious effect of nymphs and adults sucking phloem sap is deformation and injury to shoots and twigs leading to wilt and destruction.

Moreover, this planthopper produces considerable amounts of honeydew because it lacks a filter chamber and has a midgut cellular membrane, which prevents efficient consumption of sugars (Lucchi *et al.* 1999). The excreted honeydew is often colonized by sooty moulds from several taxa, especially the family Capnodiaceae (Della Gustina and Navarro 1993). It is the most serious impairment of diverse plants by *M. pruinosa* in Europe as the honeydew and hyphae of microfungi stop transpiration. Nymphs and adults feed mainly during daylight hours, whereas local movement of nymphs and dispersal and mating of adults take place at night (Wilson and Lucchi 2007).

Another problem is that the juveniles and adults produce a significant amount of wax that covers the whole body. Wax filaments deposited on leaves and shoots destroy the aesthetic value of ornamentals in nurseries and parks. The wax protects insects against adverse abiotic (UV radiation, rain) and biotic factors (entomopathogenic fungi, parasitoid insects and predators) (Lucchi and Santini 2001). Moreover, in this species, the wax probably plays an important role in preventing individuals from becoming contaminated with honeydew, perpetually secreted by juveniles and adults, which would cover the cuticle with sticky droplets (Lucchi and Mazzoni 2004).

Because *M. pruinosa* is a typical phloem feeder, it has been proposed as a possible vector of phytoplasmas. According to the analysis of phytoplasma 16S rRNA gene sequences, several studies have documented the occurrence of aster yellows (16SrI-B), clover phyllody (16SrI-C), stolbur (16SrXII-A), elm yellows (16SrV) and apple proliferation (16SrX)

phytoplasmas in the insect (Danielli *et al.* 1996; Landi *et al.* 2007).

Further experiments were carried out to assess the vector competence of this species, which showed that *M. pruinosa* was unable to transmit flavescentia dorée phytoplasma (16SrV group) and clover phyllody (16SrI-C subgroup) to grapevine, broadbean (*Vicia faba*) and nettle (*Urtica dioica*) (Bressan *et al.* 2006; Trivellone *et al.* 2019). However, the recent work of Mergenthaler *et al.* (2020) based on rigorous experiments gives experimental evidence that *M. pruinosa* is a vector of AY phytoplasmas (16SrI-B subgroup) to French marigold (*Tagetes patula*). This work is not inconsistent with the previously mentioned findings because flavescentia dorée (16SrV group) or clover phyllody (16SrI-C subgroup) are phylogenetically and ecologically distant phytoplasmas compared to AY phytoplasmas (16SrI-B subgroup). Another point is that all these other transmissions were attempted to laboratory experimental plants, which may explain why they did not succeed.

The ability of *M. pruinosa* to transmit the 16SrI-B group in Hungary can be of tremendous importance for the spread of AY in Poland taking into account that this phytoplasma is involved in epidemics and the AY disease cycle associated with winter oilseed rape in Poland (Zwolińska *et al.* 2019). The appearance of a polyphagous invasive planthopper, which has been shown to be a capable vector of this phytoplasma, poses a serious threat of achieving an epidemic level, and transmitting the phytoplasma from wild grassland plants surrounding agroecosystems to crops.

Donati *et al.* (2017) found the potential of *M. pruinosa*, one of the most common kiwifruit pests in Italy, to transmit bacterium *Pseudomonas syringae* pv. *actinidiae* Takikawa (Psa) from experimentally inoculated plants to healthy ones under laboratory conditions. In its native range there is usually no need for pest control apart from cases where obvious damage is observed, which is, however, uncommon (Mead 1969). Cutting twigs infested with eggs and the usage of many insecticides have been successful against the pest, however, many of them are of broad spectrum belonging to the groups of organophosphates and pyrethroids (Girolami and Mazzon 2001), and therefore they may be a substantial danger to beneficial arthropods, e.g., honeybees (*Apis mellifera* Linnaeus, 1758), which collect honeydew produced by the planthopper and utilize it to produce honey (Lucchi 1997). Moreover, the reinfestation of the treated crop with highly mobile individuals from neighboring vegetation is also possible.

The non-native parasitoid wasp *Neodryinus typhlocybae* (Ashmead, 1893) (Hymenoptera, Dryinidae) has been considered as a potential control agent since the 1980s, being the only natural enemy of *M. pruinosa*

occurring throughout its native range (Girolami and Mazzon 1999). The first specimens of *N. typhlocybae* originating from the USA (area of Connecticut) were repeatedly released in northwestern Italy in 1987 and the following years (Girolami and Camporese 1994). Apart from many parts of Italy, *N. typhlocybae* was also introduced into Croatia, France, Greece, the Netherlands, Slovenia, Spain and Switzerland (Strauss 2009, 2012). The appearance of the species in Austria, Hungary, Bulgaria and Slovakia during the last decade is associated with its natural dispersal across central Europe (Vétek *et al.* 2019). It is possible that the parasitoid will also appear in Poland if populations of its host increase significantly.

Females of *N. typhlocybae* parasitize the third, fourth and fifth nymphal stages of *M. pruinosa*, and they also prey on the nymphs. The egg of the parasitoid is inserted by the female into the intersegmental membrane below the mesothoracic wing pad of the flatid nymph. The hatching and developing of white-yellowish larva may be observed with its posterior part protruding partly from the body of the host below the wing pad, forming a thylacium. The mature larva penetrates the host body, destroys its organs, and finally leaves the host and prepares a whitish, oval, double-walled cocoon under the residues of the dead host (Guglielmino and Bückle 2003). It is important that *N. typhlocybae* attacks exclusively *M. pruinosa*, having no affinity to native European planthoppers.

Interestingly, Bocca *et al.* (2020) recently provided evidence that the species of *Oligosita collina* group (Hymenoptera, Trichogrammatidae) parasitizes eggs of *M. pruinosa* at a parasitization rate of over 40%, which is much higher than the one showed for the previously mentioned *N. typhlocybae*. The parasitization rate mainly depends on the host egg density and the abundance of plants appropriate for the oviposition. *O. cf. collina* is probably attracted by the exudates or honeydew manufactured by the planthopper, which can perform as a contact-kairomone.

There are examples of insects and spiders, which prey on *M. pruinosa*. Kahrer *et al.* (2009) observed that *Coccinella septempunctata* Linnaeus, 1758 preys on 3rd and 4th instar larva of the planthopper. Following this, Grozea *et al.* (2015) tried to introduce biological control against this species by using Coccinellid beetles in ornamental plants in Romania. Camerini (2017) researched a spider species to provide biological control against this pest in northern Italy. The community of spiders mainly covered species belonging to Agelenidae (27.4%), Linyphiidae (26.7%) and Araneidae (15.6%), with *Agelena labyrinthica* (Clerck, 1757) and *Linyphia triangularis* (Clerck, 1757) as the most common planthopper predators. Almost all residues of *M. pruinosa* found in the webs were adults of the pest, while the predation of juvenile stages was insignificant.

Summarizing, *M. pruinosa* can pose a real danger, both for ornamental and agricultural plants (Grozea *et al.* 2011). At present, being in the settling period in the city of Warsaw, it is associated mainly with ornamental plants, however, we predict migration of the planthopper outside the city to suburbs and agricultural areas. Permanent monitoring of the species in its primary locality and neighboring areas is recommended as a preventive control measure, including visual inspections of plants in parks and allotments, especially from May to July when the wax filaments are clearly visible. It is possible that the insect will soon be recorded in other cities of Poland, if foreign, egg-infested ornamental plants are planted in parks and gardens.

Acknowledgements

We are indebted to Paweł Jarzembowski, M.S. (Resource and Teaching Support Centre, Wrocław University of Environmental and Life Sciences, Wrocław) for taking the photographs of *M. pruinosa* genital structures. We would also like to thank Prof. Wiktor Kotowski and Dr. Łukasz Kozub (University of Warsaw, Faculty of Biology) for their help with plant identification. Finally, we are grateful to two anonymous reviewers for their constructive comments, which helped us to improve the manuscript.

References

- Alma A., Ferracini C., Burgio G. 2005. Development of a sequential plan to evaluate *Neodryinus typhlocybae* (Ashmead) (Hymenoptera: Dryinidae) population associated with infestation in Northwestern Italy. *Environmental Entomology* 34 (4): 819–824. DOI: <https://doi.org/10.1603/0046-225X-34.4.819>
- Bagnoli B., Lucchi A. 2000. Dannosità e misure di controllo integrato, p. 65–88. In: “La *Metcalfa* negli ecosistemi italiani” (A. Lucchi, ed.). ARSIA Regione Toscana, Italy.
- Bartlett C.R., Dietz L.L., Dmitriev D.A., Sanborn A.F., Soulier-Perkins A., Wallace M.S. 2018. The diversity of the true hoppers (Hemiptera: Auchenorrhyncha). p. 501–590. In: “Insect Biodiversity: Science and Society”. Vol. II. (R.G. Foottit, P.H. Adler, eds.). Wiley Blackwell, Chichester, UK.
- Bartlett C.R., O'Brien L.B., Wilson S.W. 2014. A review of the planthoppers (Hemiptera: Fulgoroidea) of the United States. *Memoirs of the American Entomological Society* 50: 1–287.
- Bocca F.M., Picciau L., Laudonia S., Alma A. 2020. Palaearctic egg parasitoids interaction to three grapevine exotic pests in Northwestern Italy: A new association involving *Metcalfa pruinosa*. *Insects* 11 (9): 1–18. DOI: <https://doi.org/10.3390/insects11090610>
- Bourgoin T. 2022. FLOW (Fulgoromorpha Lists on The Web): A world knowledge base dedicated to Fulgoromorpha. Version 8. Available on: <http://hemiptera-databases.org/flow/> [Accessed: 02 February 2022].
- Bressan A., Clair D., Séméty O., Boudon-Padieu E. 2006. Insect injection and artificial feeding bioassays to test vector specificity of flavescence dorée phytoplasma. *Phytopathology* 96: 790–796. DOI: 10.1094/PHYTO-96-0790.

- Burakowski B., Mroczkowski M., Stefańska J. 1973. Chrzęszcze Coleoptera – Biegaczowate – Carabidae. [Beetles Coleoptera – Ground beetles – Carabidae]. Part 1. Katalog Fauny Polski 23 (2): 1–232. (in Polish)
- Byeon D.H., Jung J.M., Jung S., Lee W.-H. 2018. Prediction of global geographic distribution of *Metcalfa pruinosa* using CLIMEX. Entomological Research 48: 99–107.
- Camerini G. 2017. Spiders (Araneae) as predators of the exotic *Metcalfa pruinosa* (Say, 1830) (Homoptera: Flatidae) in the central western Po Floodplain (Northern Italy). Indian Journal of Arachnology 6 (1): 72–80.
- Danielli A., Bertaccini A., Vibio M., Mori N., Murari E., Posenato G., Girolami V. 1996. Detection and molecular characterization of phytoplasmas in the planthopper *Metcalfa pruinosa* (Say) (Homoptera: Flatidae). Phytopathologia Mediterranea 35: 62–65.
- Donati I., Mauri S., Buriani G., Cellini A., Spinelli F. 2017. Role of *Metcalfa pruinosa* as a vector for *Pseudomonas syringae* pv. *actinidiae*. Plant Pathology Journal 33 (6): 554–560. DOI: <https://doi.org/10.5423/PPJ.OA.04.2017.0074>
- Girolami V., Camporese P. 1994. Prima moltiplicazione in Europa di *Neodryinus typhlocybae* (Ashmead) (Hymenoptera: Dryinidae) su *Metcalfa pruinosa* (Say) (Homoptera: Flatidae). p. 655–658. In: Atti XVII Congresso Nazionale Italiano di Entomologia, 13–18 June 1994, Udine, Italy.
- Girolami V., Mazzon L. 1999. Controllo di *Metcalfa pruinosa* ad opera di *Neodryinus typhlocybae*. L'Informatore Agrario 55 (19): 87–91.
- Girolami V., Mazzon L. 2001. Esperienze di lotta biologica e integrata a *Metcalfa pruinosa* con *Neodryinus typhlocybae*. Atti dell'Accademia Nazionale Italiana di Entomologia 49: 165–184.
- Giustina W. Della. 1986. *Metcalfa pruinosa* (Say 1830), nouveau-té pour la Faune de France [Hom. Flatidae]. Bulletin de la Société entomologique de France 91 (3–4): 89–92.
- Giustina W. Della, Navarro E. 1993. *Metcalfa pruinosa*, un nouvel envahisseur? Phytoma – La Défense des végétaux 451: 30–32.
- Grozea I., Gogan A., Virteiu A.M., Grozea A., Stef R., Molnar L., Carabet A., Dinnesen S. 2011. *Metcalfa pruinosa* Say (Insecta: Homoptera: Flatidae): a new pest in Romania. African Journal of Agricultural Research 6 (27): 5870–5877. DOI: [10.5897/AJAR11.478](https://doi.org/10.5897/AJAR11.478)
- Grozea I., Vlad M., Virteiu A.M., Stef R., Carabet A., Molnar L., Mazare V. 2015. Biological control of invasive species *Metcalfa pruinosa* Say (Insecta: Hemiptera: Flatidae) in ornamentals plants by using Coccinellids. Journal of Biotechnology 208 (Suppl.): 112. DOI: <https://doi.org/10.1016/j.jbiotec.2015.06.352>
- Guglielmino A., Bückle C. 2003. Description of larval instars of *Neodryinus typhlocybae* (Ashmead, 1893) (Hymenoptera Dryinidae), with remarks on its biology. Mitteilungen aus dem Museum für Naturkunde in Berlin-Deutsche Entomologische Zeitschrift 50 (1): 143–150. DOI: <https://doi.org/10.1002/mmnd.20030500114>
- Hoch H. 2017. Fulgoromorpha. Fauna Europaea version 2017.06. Available on: <https://fauna-eu.org> [Accessed: 02 February 2022]
- Holzinger W.E., Kammerlander I., Nickel H. 2003. The Auchenorrhyncha of Central Europe. Vol. 1: Fulgoromorpha, Cicadomorpha excl. Cicadellidae. Brill, Leiden–Boston. XV + 672 pp.
- Kahrer A., Strauss G., Stolz M., Moosbeckhofer R. 2009. Beobachtung zur Faunistik und Biologie der vor kurzem nach Österreich eingeschleppten Bläulingszikade (*Metcalfa pruinosa*). Beiträge zur Entomofaunistik 10: 17–30.
- Kim D.-E., Kil J. 2014. Occurrence and Host Plant of *Metcalfa pruinosa* (Say) (Hemiptera: Flatidae) in Korea. Journal of Environmental Science International 23: 1385–1394. DOI: [10.5322/JESI.2014.23.8.1385](https://doi.org/10.5322/JESI.2014.23.8.1385)
- Landi F., Prandini A., Paltrinieri S., Mori N., Bertaccini A. 2007. Detection of different types of phytoplasmas in stone fruit orchards in northern Italy. Bulletin of Insectology 60: 163–164.
- Lauterer P. 2002. Citrus Flatid Planthopper – *Metcalfa pruinosa* (Hemiptera: Flatidae), a new pest of ornamental horticulture in the Czech Republic. Plant Protection Science 38 (4): 145–148.
- Lucchi A. 1997. *Metcalfa pruinosa* and honey production in Italy. American Bee Journal 137: 532–535.
- Lucchi A., Giannotti P., Santini L. 1999. Midgut and associated structures in the Nearctic flatid *Metcalfa pruinosa* (Say) (Homoptera Fulgoroidea) [unpaginated]. In: Proceedings of the 10th International Auchenorrhyncha Congress, 6–10 September 1999, Cardiff (Wales), United Kingdom.
- Lucchi A., Mazzoni E. 2004. Wax production in adults of planthoppers (Homoptera: Fulgoroidea) with particular reference to *Metcalfa pruinosa* (Flatidae). Annals of the Entomological Society of America 97: 1294–1298. DOI: [https://doi.org/10.1603/0013-8746\(2004\)097\[1294:WPIAOP\]2.0.CO;2](https://doi.org/10.1603/0013-8746(2004)097[1294:WPIAOP]2.0.CO;2)
- Lucchi A., Santini L. 2001. Aspetti fisiologici e morfologici in *Metcalfa pruinosa* (Hom. Fulgoroidea) con riferimento agli effetti prodotti sulle produzioni agricole e sulle alberature ornamentali. Atti della Accademia Nazionale Italiana di Entomologia, Rendiconti. Anno XLIX: 131–147.
- Mead F.W. 1969. Citrus flatid planthopper, *Metcalfa pruinosa* (Say). Homoptera: Flatidae. Entomological Circular, Florida D.A. 85: 1–2.
- Mergenthaler E., Fodor J., Kiss E., Bodnár D., Kiss B., Viczián O. 2020. Biological and molecular evidence for the transmission of aster yellows phytoplasma to French marigold (*Tagetes patula*) by the flatid planthopper *Metcalfa pruinosa*. Annals of Applied Biology 176: 249–256. DOI: [10.1111/aab.12582](https://doi.org/10.1111/aab.12582)
- O'Brien L. 2002. The Wild Wonderful World of Fulgoromorpha. Denisia (NF) 4: 83–102.
- Strauss G. 2009. Host range testing of the Nearctic beneficial parasitoid *Neodryinus typhlocybae*. BioControl 54: 163–171. DOI: <https://doi.org/10.1007/s10526-008-9176-7>
- Strauss G. 2012. Environmental risk assessment for *Neodryinus typhlocybae*, biological control agent against *Metcalfa pruinosa*, for Austria. European Journal of Environmental Sciences 2 (2): 102–109. DOI: <https://doi.org/10.14712/23361964.2015.30>
- Trivellone V., Ripamonti M., Angelini E., Filippini L., Rossi M., Marzachi C., Galetto L. 2019. Evidence suggesting interactions between immunodominant membrane protein imp of Flavescence dorée phytoplasma and protein extracts from distantly related insect species. Journal of Applied Microbiology 127: 1801–1813. DOI: <https://doi.org/10.1111/jam.14445>
- Tropicos.org. Missouri Botanical Garden (v3.3.2). Available on: <https://tropicos.org> [Accessed: 02 February 2022]
- Wilson S.W., Lucchi A. 2000. Aspetti sistematici, corologici, ecologici. p. 13–28. In: “La *Metcalfa* Negli Ecosistemi Italiani” (A. Lucchi, ed.). Agenzia Regionale per lo Sviluppo e l'Innovazione nel settore Agricolo-forestale, Firenze, Italy.
- Wilson S.W., Lucchi A. 2007. Feeding activity of the flatid planthopper *Metcalfa pruinosa* (Hemiptera: Fulgoroidea). Journal of the Kansas Entomological Society 80 (2): 175–178. DOI: [https://doi.org/10.2317/0022-8567\(2007\)80\[175:FAOTFP\]2.0.CO;2](https://doi.org/10.2317/0022-8567(2007)80[175:FAOTFP]2.0.CO;2)
- Wilson S.W., McPherson J.E. 1981. Life histories of *Anormenis septentrionalis*, *Metcalfa pruinosa* and *Ormenoides venusta* with descriptions of immature stages. Annals of the Entomological Society of America 74 (3): 299–311. DOI: <https://doi.org/10.1093/aesa/74.3.299>
- Vétek G., Korányi D., Mezöfi L., Bodor J., Péntes B., Olmi M. 2019. *Neodryinus typhlocybae*, a biological control agent of *Metcalfa pruinosa*, spreading in Hungary and reaching Slovakia. Bulletin of Insectology 72 (1): 1–11.
- Vlad M., Grozea I. 2016. Host plant species of the Cicada *Metcalfa pruinosa* in Romania. Bulletin UASVM series

- Agriculture 73 (1): 131–137. DOI: 10.15835/buasvmcn-agr:11383
- Yeyeun K., Minyoung K., Ki-Jeong H., Seunghwan L. 2011. Outbreak of an exotic flatid, *Metcalfa pruinosa* (Say) (Homoptera: Flatidae) in the capital region of Korea. Journal of Asia-Pacific Entomology 14 (4): 473–478. DOI: <http://dx.doi.org/10.1016/j.aspen.2011.06.002>
- Zangheri S., Donadini P. 1980. Comparsa nel Veneto di un Omottero nearctico *Metcalfa pruinosa* Say (Homoptera, Flatidae). Redia 63: 301–305.
- Zwolińska A., Krawczyk K., Borodynko-Filas N., Pospieszny H. 2019. Non-crop sources of Rapeseed Phyllody phytoplasma ('*Candidatus* Phytoplasma asteris': 16SrI-B and 16SrI-(B/L) L), and closely related strains. Crop Protection 119: 59–68. DOI: <https://doi.org/10.1016/j.cropro.2018.11.015>